



Temple COLLECTION

Temple

COLLECTION



PIEL S.A. - Avda. Del Cordell de Murcia, 6 - 46890 AGULLENT - SPAIN
+34 962 907 400
www.piel.es





Tecnología de fácil limpieza Technology for easy clean

Nuestro tratamiento Pielsa Clean protege el tejido frente a manchas de líquidos en solo tres sencillos pasos.

Our Pielsa Clean treatment protects the fabric against liquid stains in just three simple steps.



Para mantener y cuidar el tejido frente a manchas grandes, persistentes o grasas, se recomienda lavarlo a máquina siguiendo las instrucciones.

In order to keep the fabric clean when facing big-sized, greasy or persistent stains, we recommend following the cleaning instructions detailed in the fabric technical datasheet.



Escanea este código QR para ver nuestros videos de limpieza con diferentes tipos de manchas.



Scan this QR code to watch our cleaning videos with different types of stains.

Temple

COLLECTION

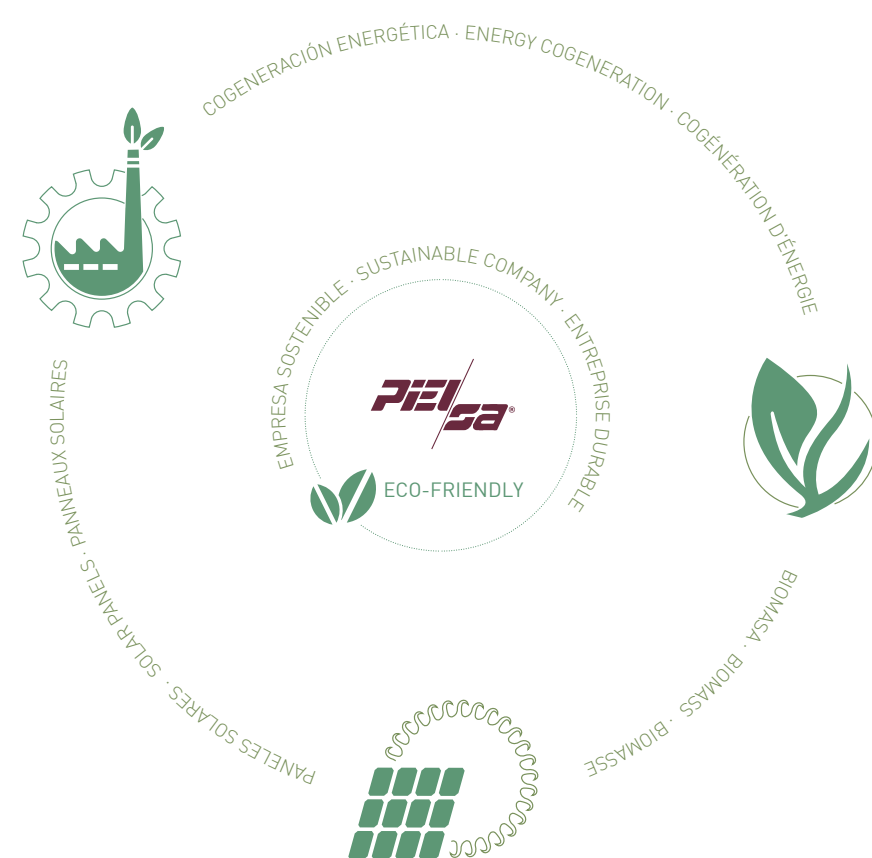
Tejiendo por un mundo mejor

Piel SA, es una empresa comprometida con las personas, la calidad, el servicio y el planeta.



Weaving for a better world

Piel SA, is a company committed to people, quality, service and the planet.



Piel SA, fundada en 1976, es una empresa textil con una área de producción de más de 70.000m², certificada por SGS para la Norma de Calidad y Satisfacción del Cliente **ISO 9001: 2015**.

Piel SA, founded in 1976, is a textile company with 70.000m² production area, certified by SGS for the Quality and Customer Satisfaction Standard **ISO 9001:2015**.

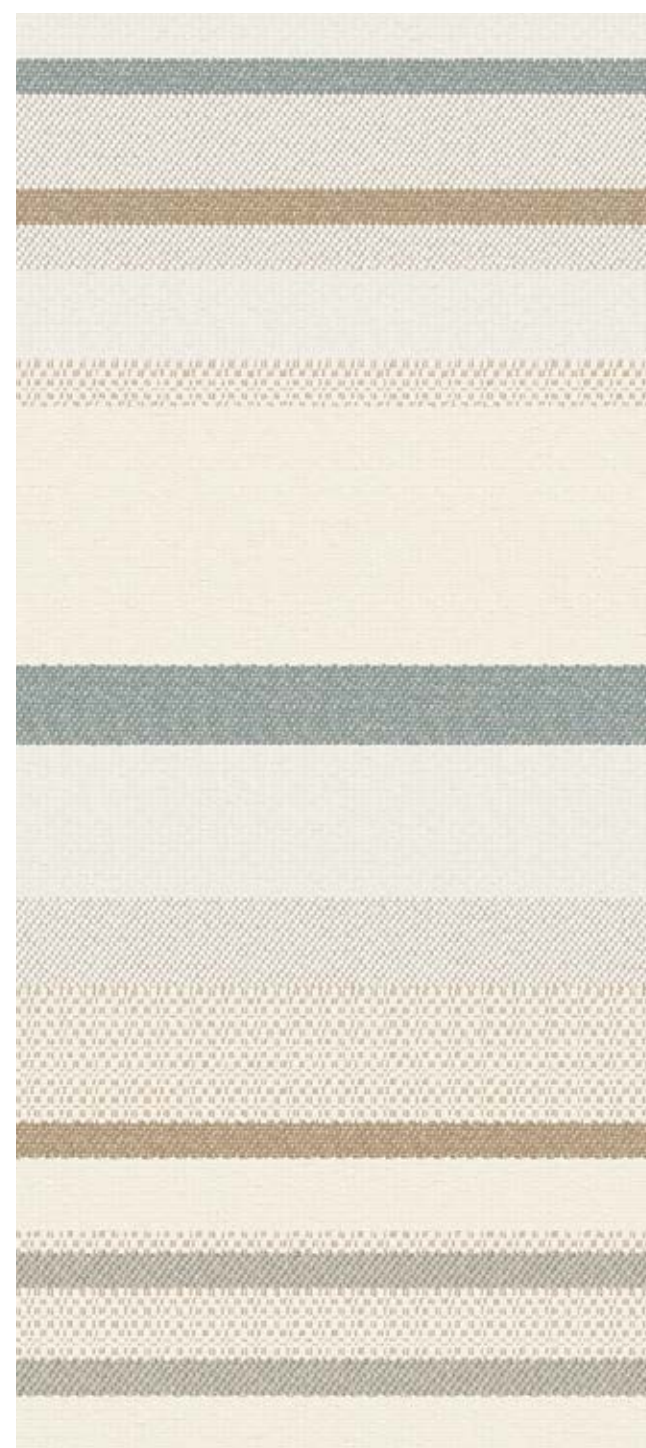
Escanea este código QR para saber más sobre nosotros.

Scan this QR code to know more about us





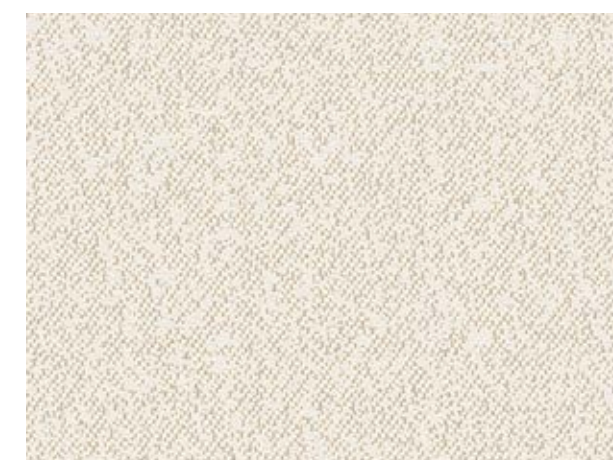
JEMER C/65



KARNAK C/65



BIBLOS C/26



DOSEL C/26



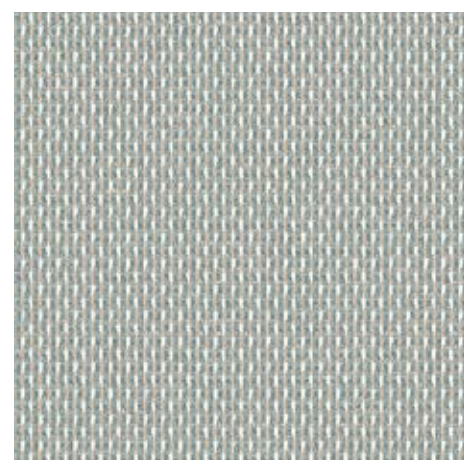
BIBLOS C/65



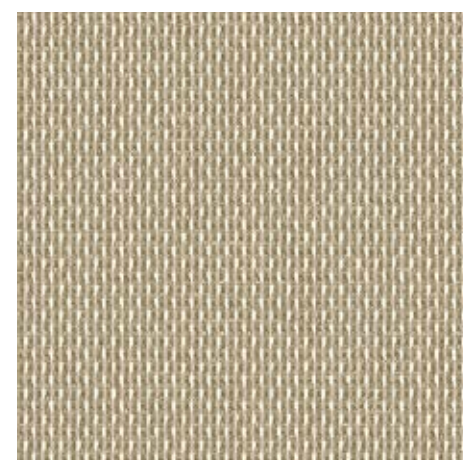
DOSEL C/65



ALUMINIO C/26



ALUMINIO C/65



ALUMINIO C/20



SETI C/26



HERA C/26



SETI C/65



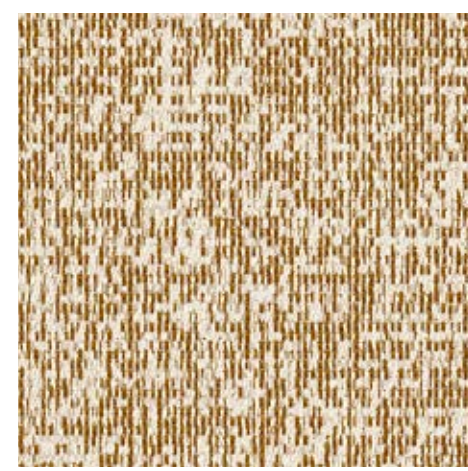
HERA C/65



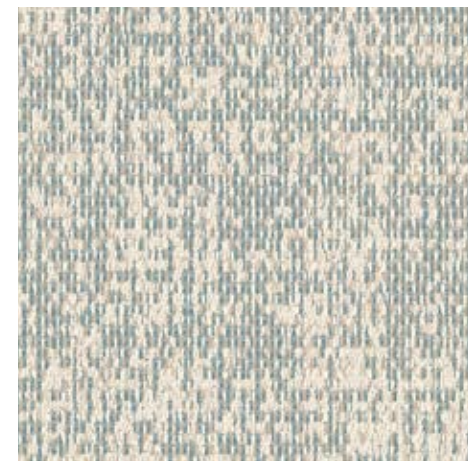
SETI C/20



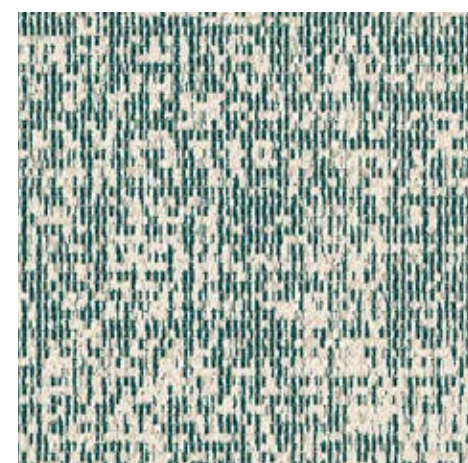
HERA C/82



SETI C/83



SETI C/65



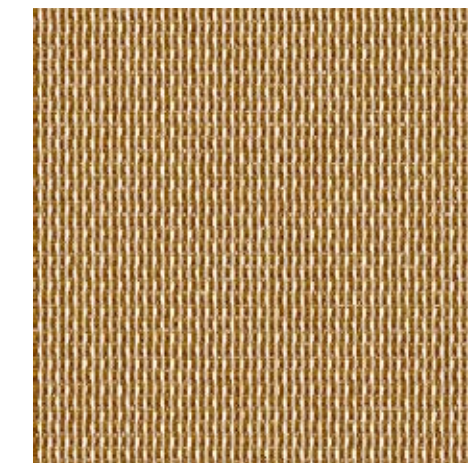
SETI C/56



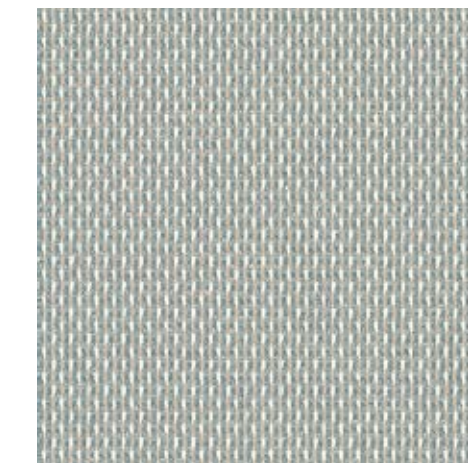
HERA C/56



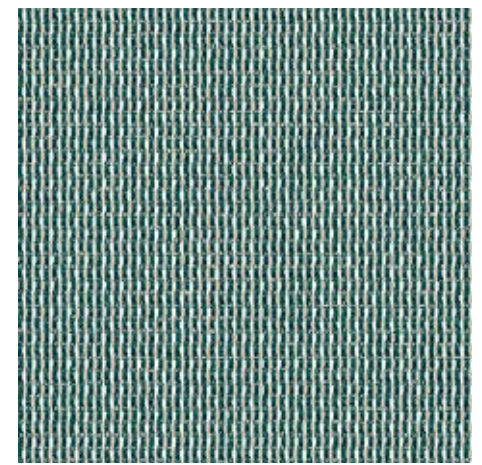
KARNAK C/58



ALUMINIO C/83



ALUMINIO C/65



ALUMINIO C/56



BIBLOS C/82



DOSEL C/82



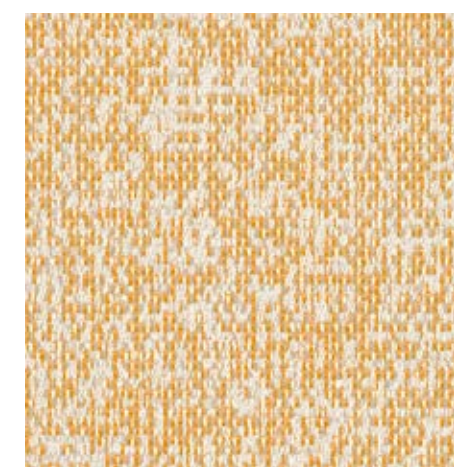
BIBLOS C/56



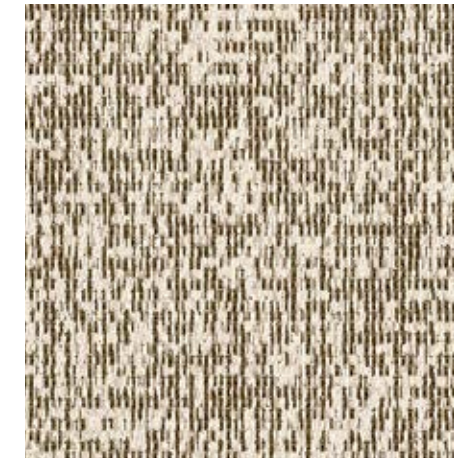
DOSEL C/56



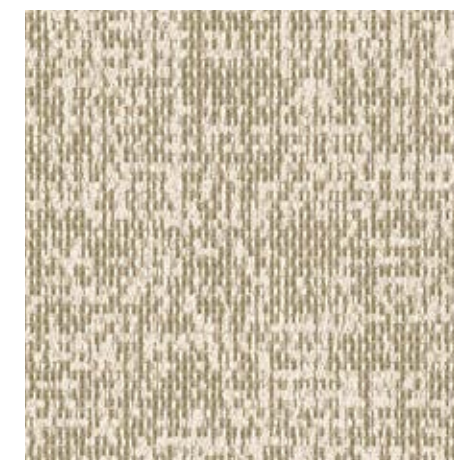
JEMER C/58



SETI C/81



SETI C/10



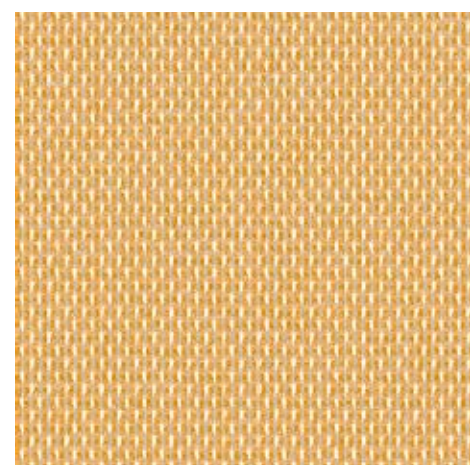
SETI C/20



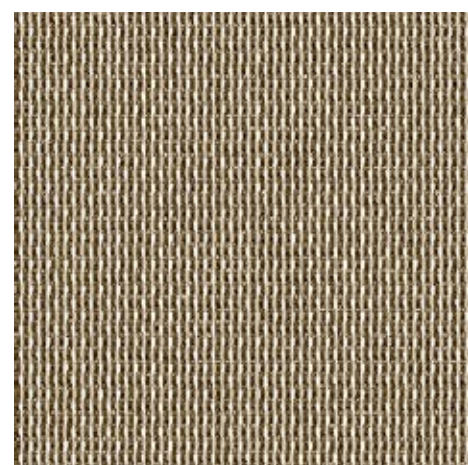
HERA C/80



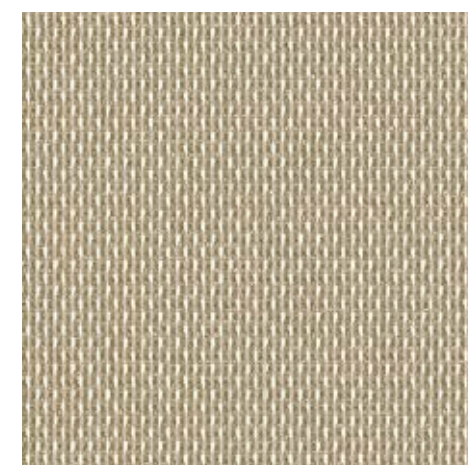
HERA C/20



ALUMINIO C/81



ALUMINIO C/10



ALUMINIO C/20



JEMER C/80



KARNAK C/80



BIBLOS C/80



DOSEL C/80



BIBLOS C/20



DOSEL C/20



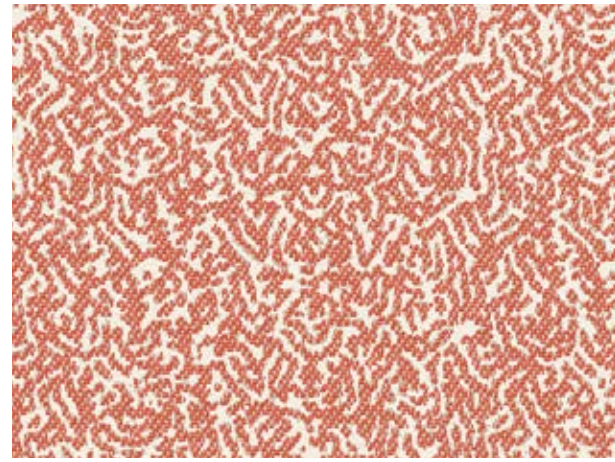
BIBLOS C/70



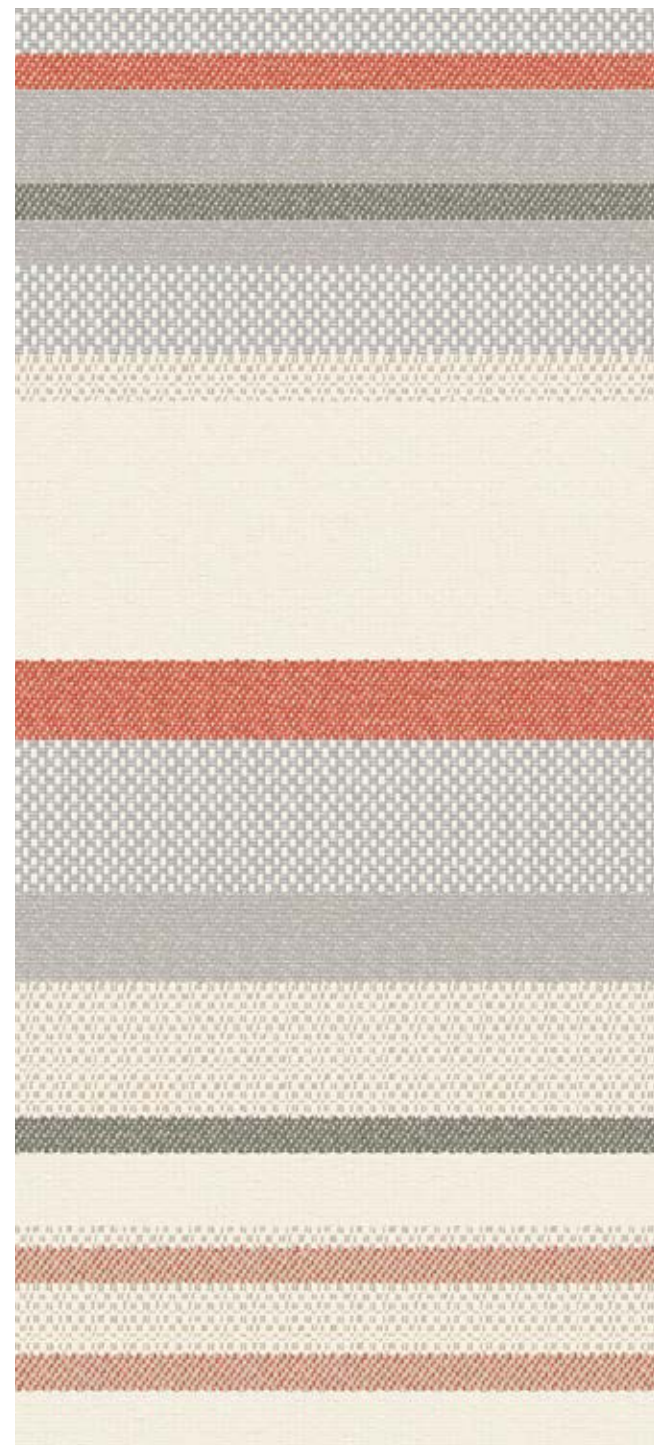
DOSEL C/70



BIBLOS C/40



DOSEL C/40



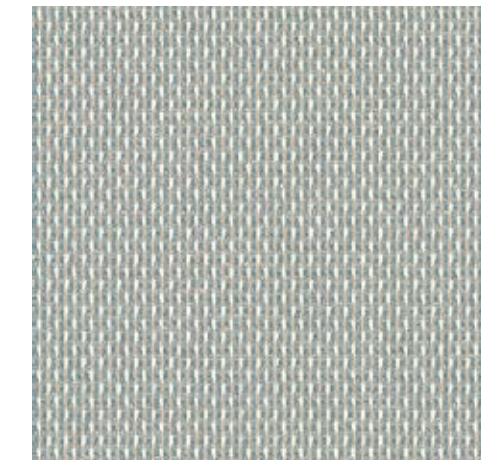
KARNAK C/74



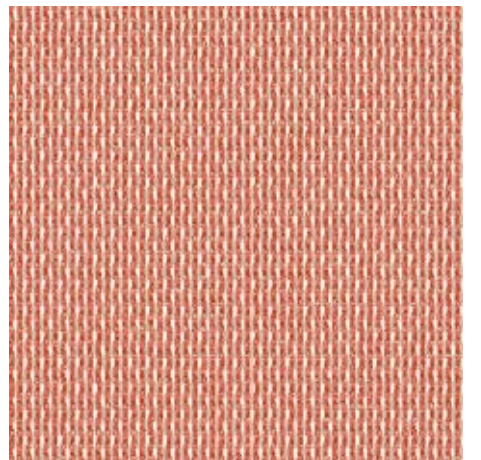
JEMER C/74



ALUMINIO C/71



ALUMINIO C/73



ALUMINIO C/40



HERA C/70



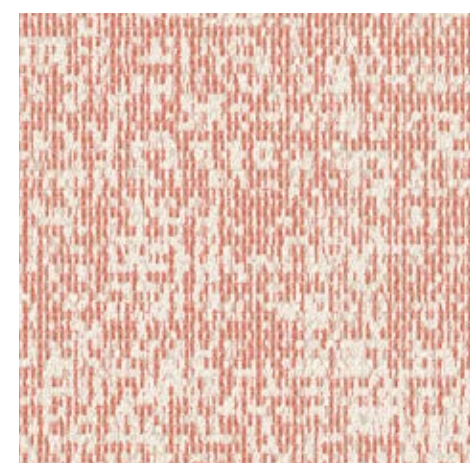
SETI C/71



SETI C/73



HERA C/40

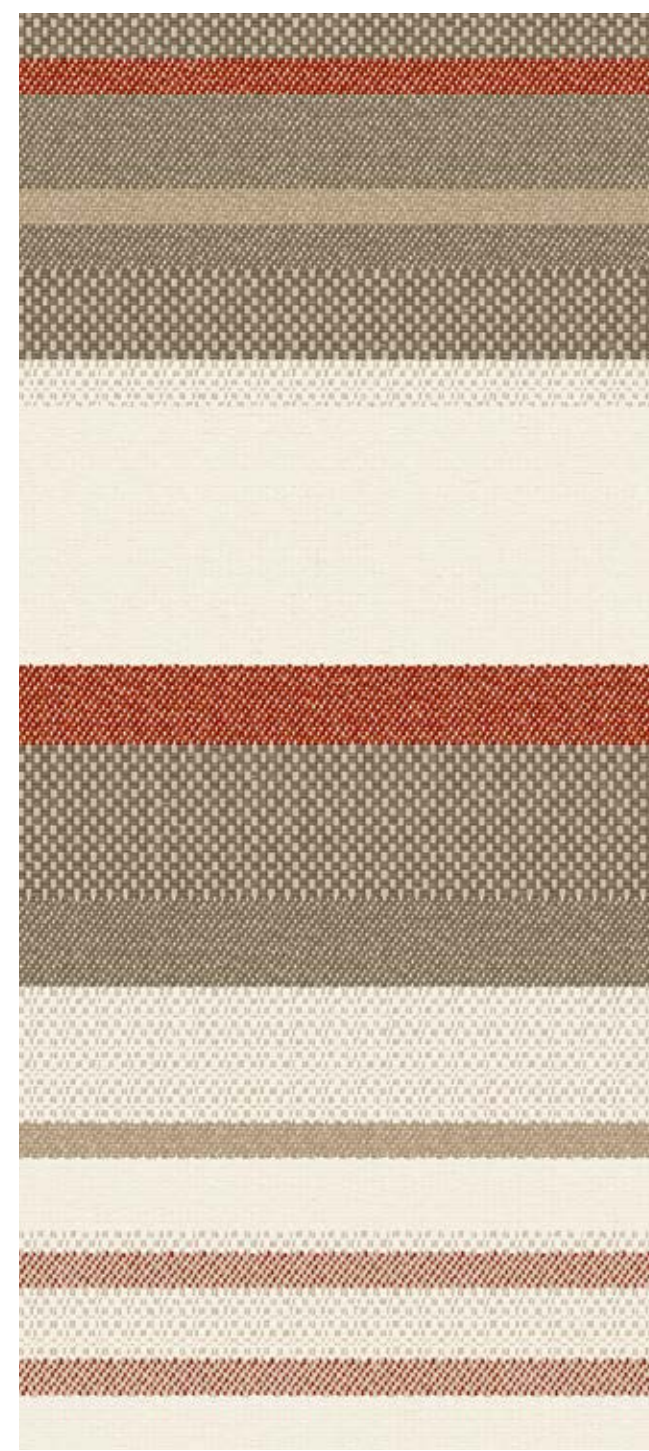


SETI C/40





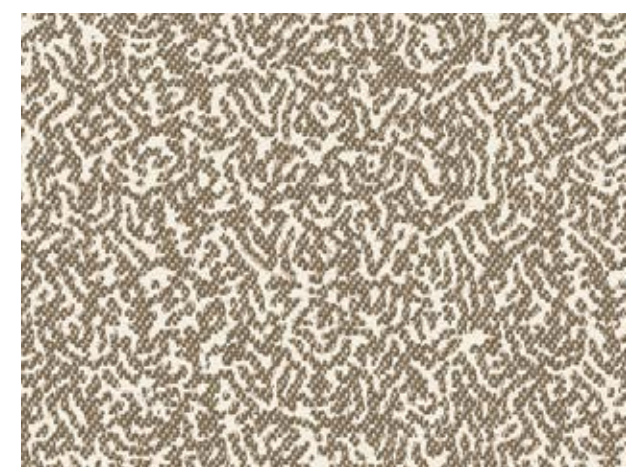
JEMER C/42



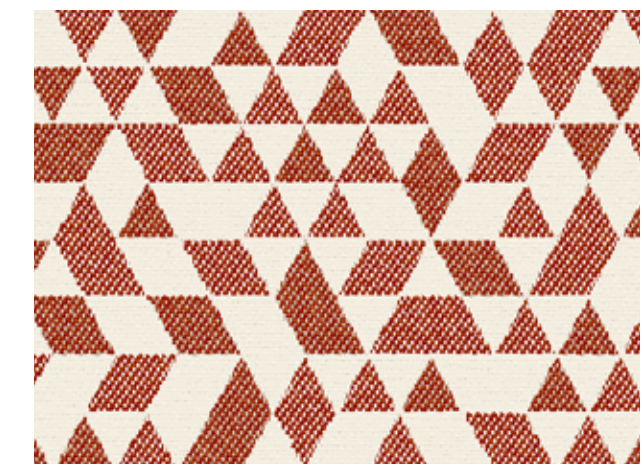
KARNAK C/42



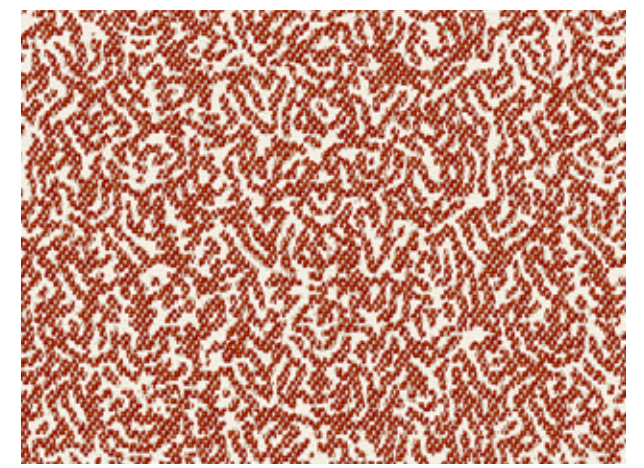
BIBLOS C/12



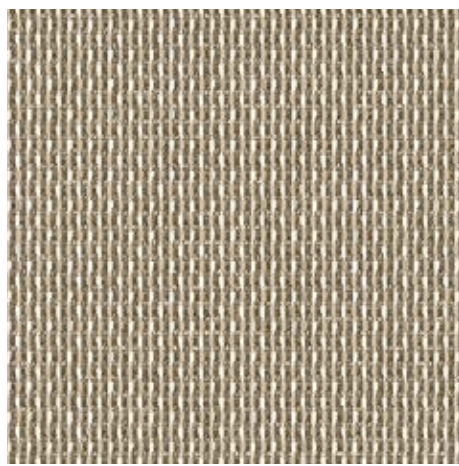
DOSEL C/12



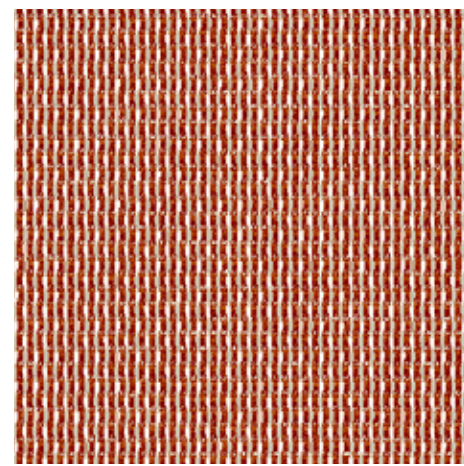
BIBLOS C/44



DOSEL C/44



ALUMINIO C/12



ALUMINIO C/44



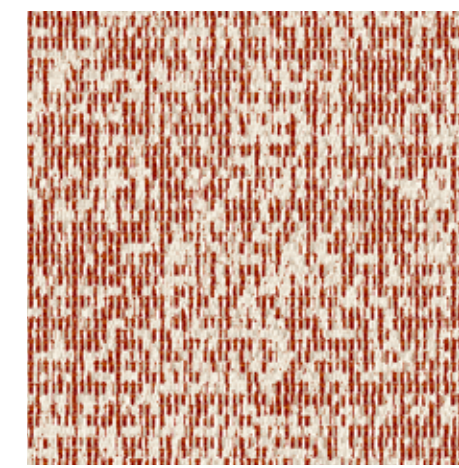
ALUMINIO C/26



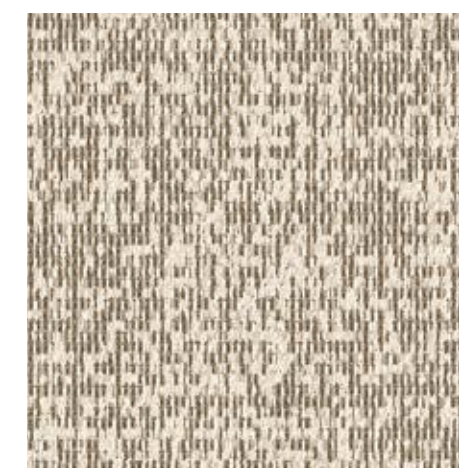
HERA C/12



SETI C/26



SETI C/44



SETI C/12

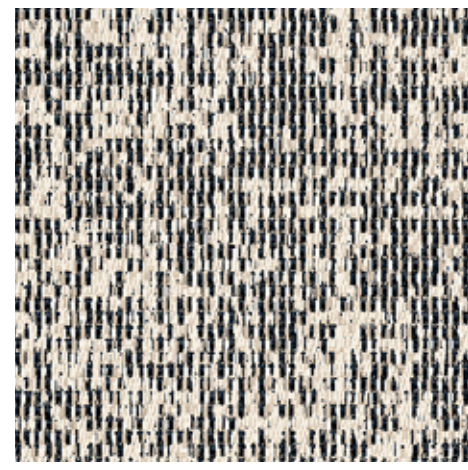


HERA C/44

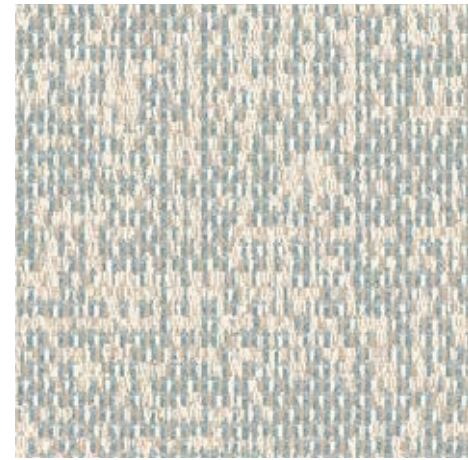




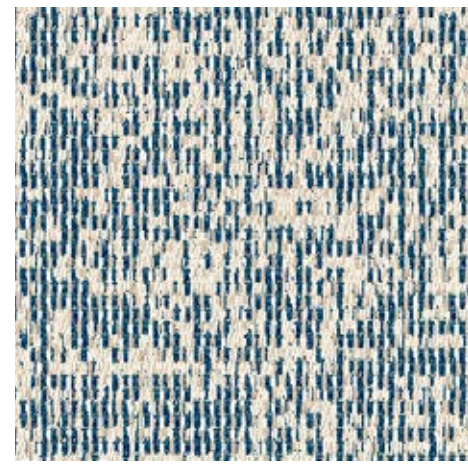
HERA C/67



SETI C/67



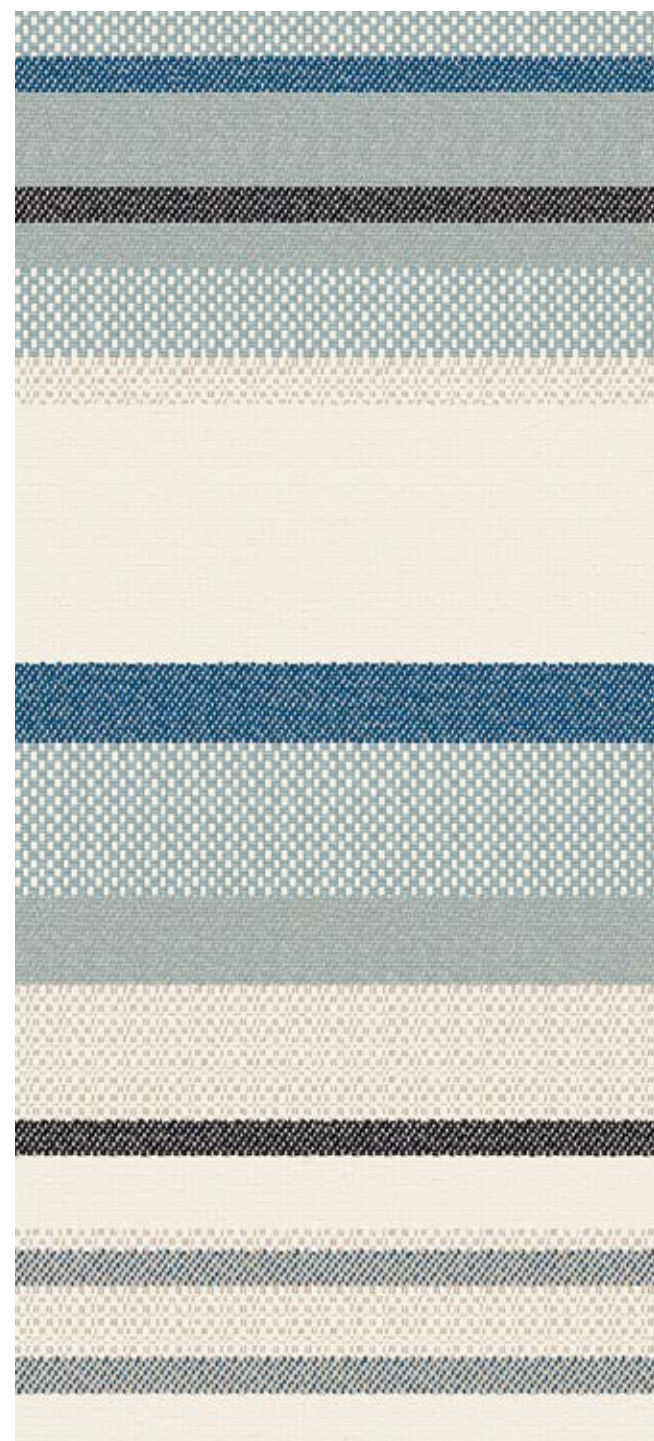
SETI C/68



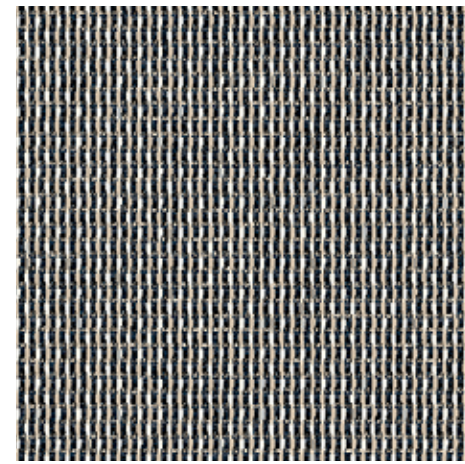
SETI C/66



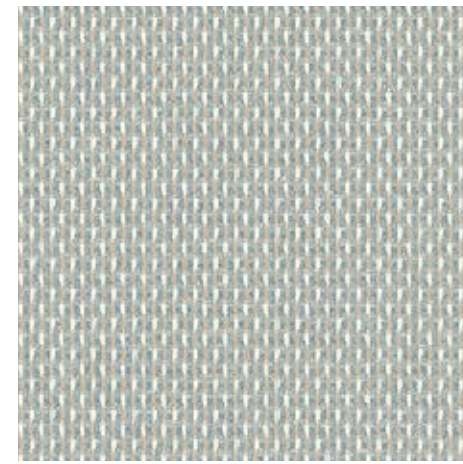
HERA C/66



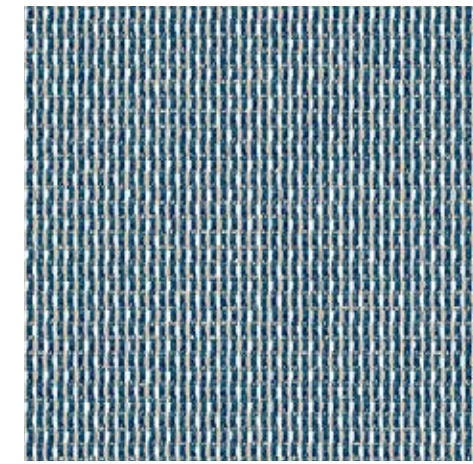
KARNAK C/66



ALUMINIO C/67



ALUMINIO C/68



ALUMINIO C/66



BIBLOS C/67



DOSEL C/67



BIBLOS C/66



DOSEL C/66



JEMER C/66



Temple

COLLECTION



1. Retira el exceso de producto de la tapicería.
1. Remove excess product from upholstery.
1. Enlever le produit excédentaire du tissu.

2. Limpiar la mancha con un paño húmedo.
2. Clean stain with a damp cloth.
2. Nettoyez la tache avec un chiffon humide.

3. Dejar secar la tapicería al aire.
3. Allow the upholstery to become air-dry.
3. Laisser sécher le tissu dans l'air.



1

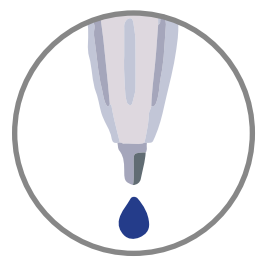


2



3

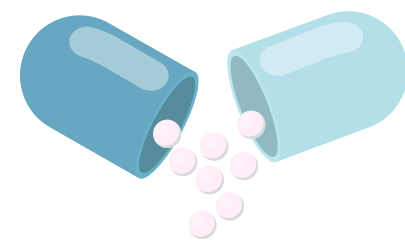
OTRAS POSIBILIDADES DE ACABADO BAJO CONSULTA
OTHER FINISHINGS AVAILABLE UPON REQUEST



Stain release
Antiboli



CO2Pure
converts CO2 - NOX - VOC'S into minerals



Encapsulated
Fragrance, cosmetics,
antistress, aloe vera



Biocides
antibacterial,
anti-dust mites,
antivirus, antifungal

FR Not solid to wash
UNE-EN13772/13773
NF P 92-503/504/505



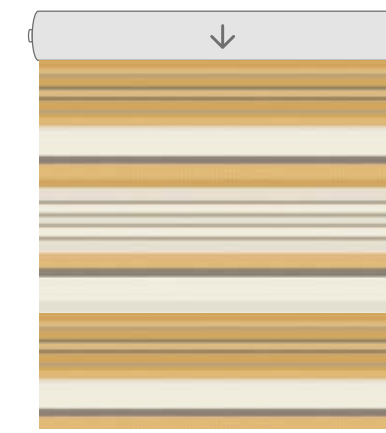
FR Solid to wash
BS5852
UNE-1021

Temple

COLLECTION



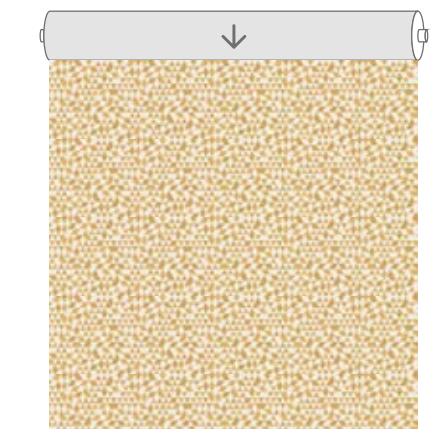
HERA. Rapport 35x36,6 cm



KARNAK. Rapport 48,3 cm



JEMER. Rapport 17,5x18,3 cm



BIBLOS. Rapport 14,1x15 cm

	CARACTERÍSTICAS TÉCNICAS				TECHNICAL CHARACTERISTICS		CARACTÉRISTIQUES TECHNIQUES	
NOMBRE NAME NOM	HERA	KARNAK	JEMER	BIBLOS	DOSEL	SETI	ALUMINIO	
COMPOSICIÓN COMPOSITION COMPOSITION	59%CO 41%PES	59%CO 41%PES	59%CO 41%PES	59%CO 41%PES	59%CO 41%PES	55%PES 45%PAN	55%PES 45%PAN	
ANCHO (cm) WIDTH (cm) LARGEUR (cm)					140			
GRAMAJE (g/m²) WEIGHT (g/m²) GRAMMAGE (g/m²)	350	350	352	349	347	306	313	
ABRASIÓN (ciclos) ABRASION TEST (cycles) TEST D'ABRASION (cycles)	40.000	40.000	40.000	40.000	40.000	40.000	35.000	
PILLING PILLING PILLING	4	4	4	4	4-5	5	4-5	
COSTURAS (u/t) SEAM STRENGTH (warp/wett) RES. DES COUTURES (c/t)	3,5/3,2	3,7/3	3/2,3	3,8/3,2	2,8/2,5	3,7/3,3	3,8/4	
ACABADO FINISH FINITION								
INSTRUCCIONES LAVADO CLEANING INSTRUCTIONS INSTRUCTIONS DE LAVAGE								
APLICACIONES APPLICATIONS APPLICATIONS								

ABRASION TEST: UNE-EN ISO 12947-2 PILLING: UNE-EN ISO 12945-2 SEAM STRENGTH: UNE-EN ISO 13936-2 LIGHT FASTNESS: UNE-EN ISO 105-B04

